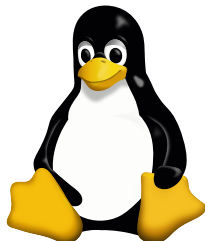


Practical Linux

Connecting to Other Machines - Extras



Department of Human Genetics
Center for Human and Clinical Genetics

Outline

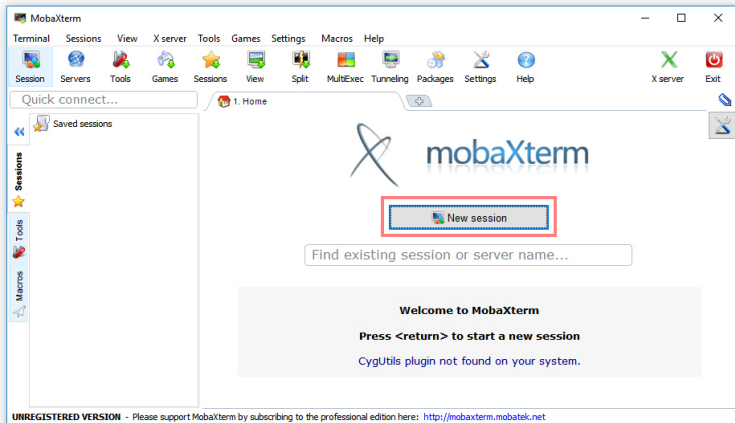
mobaXterm

Jump Server

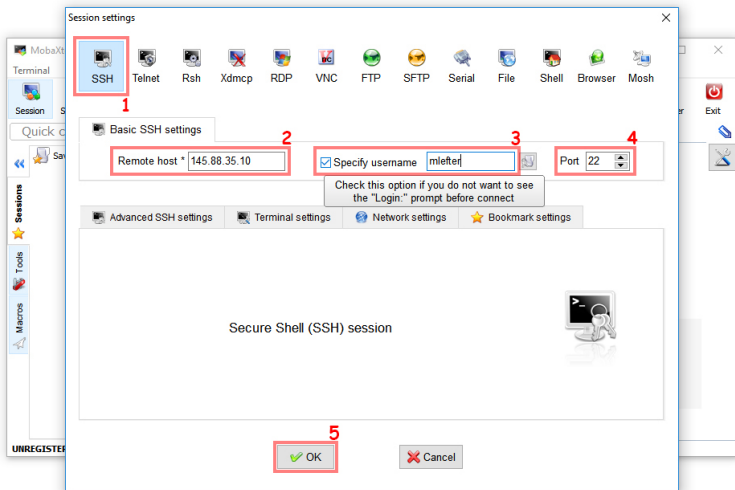
Remote copy

Linux SSH Client

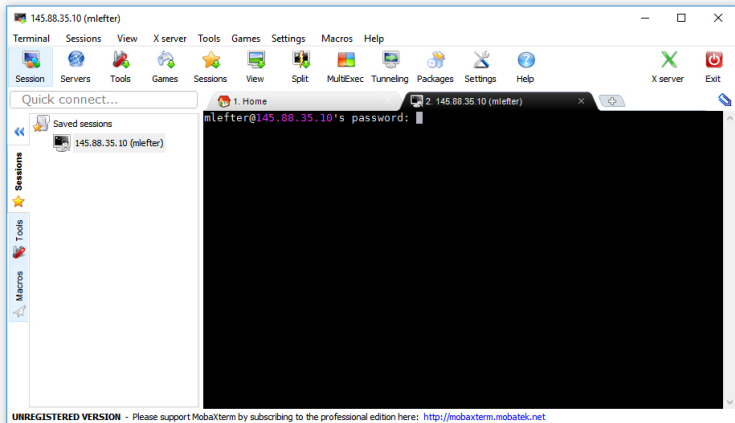
Connect to a remote machine



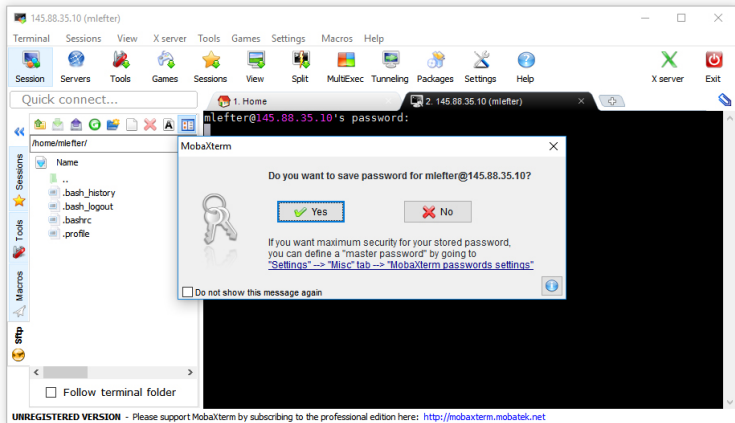
Connect to a remote machine



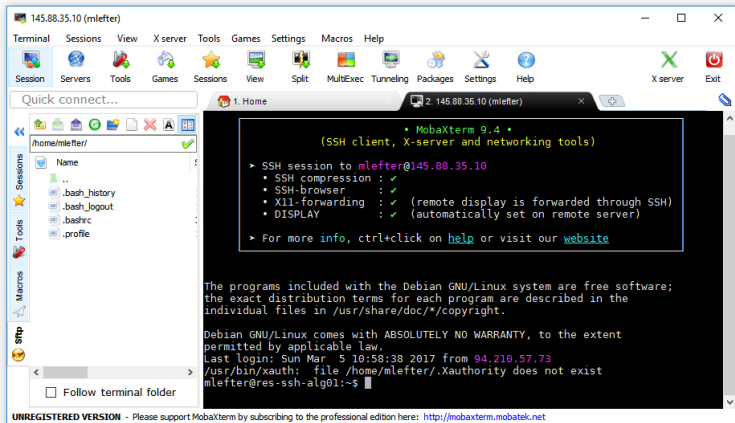
Connect to a remote machine



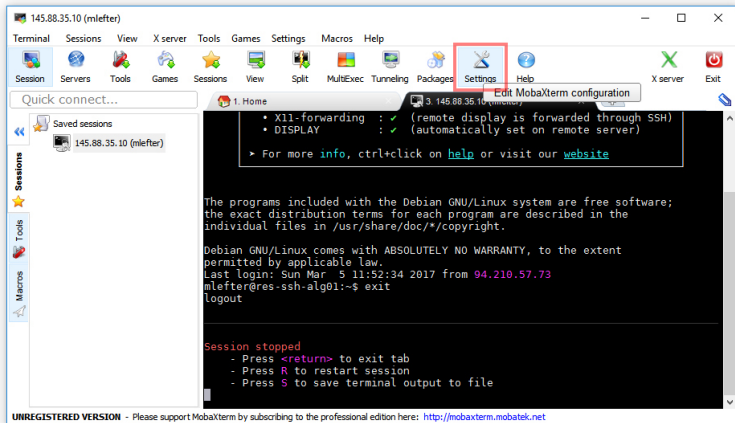
Connect to a remote machine



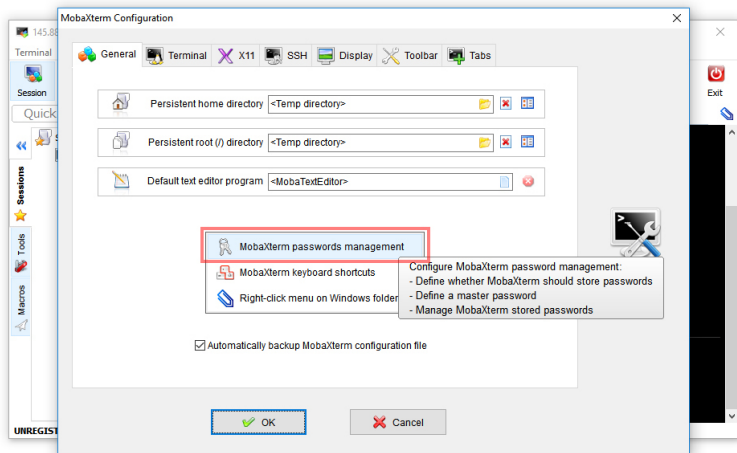
Connect to a remote machine



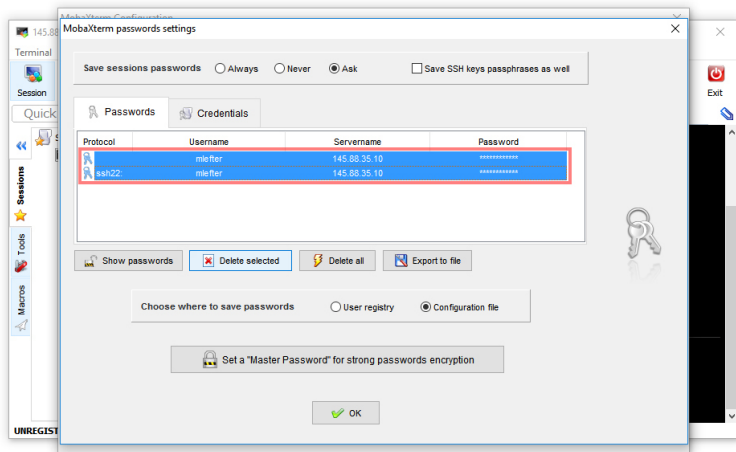
Delete saved password



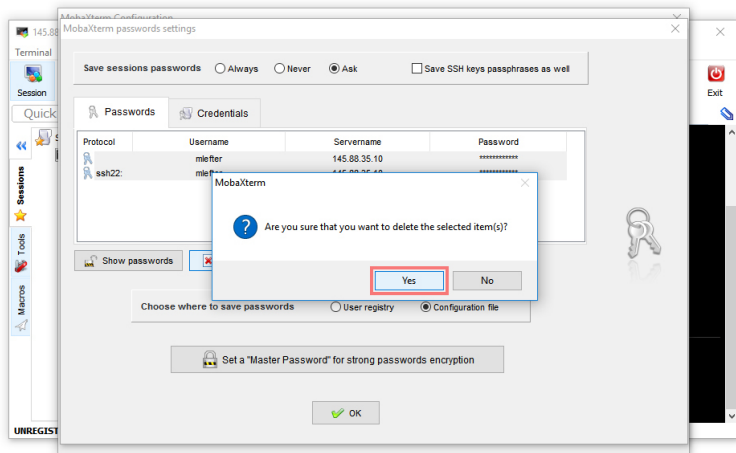
Delete saved password



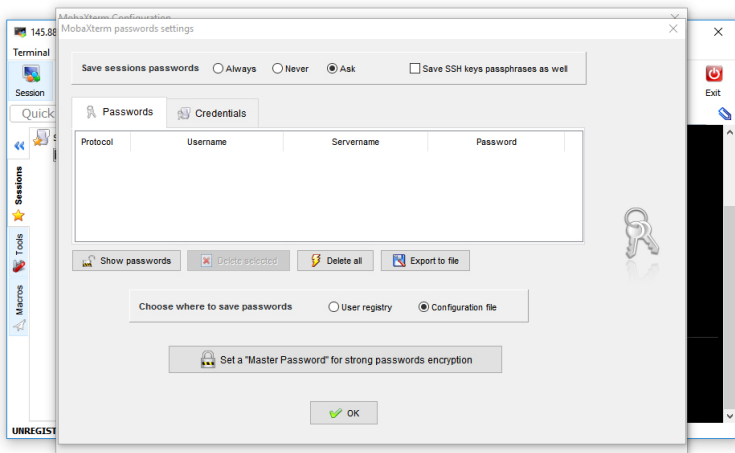
Delete saved password



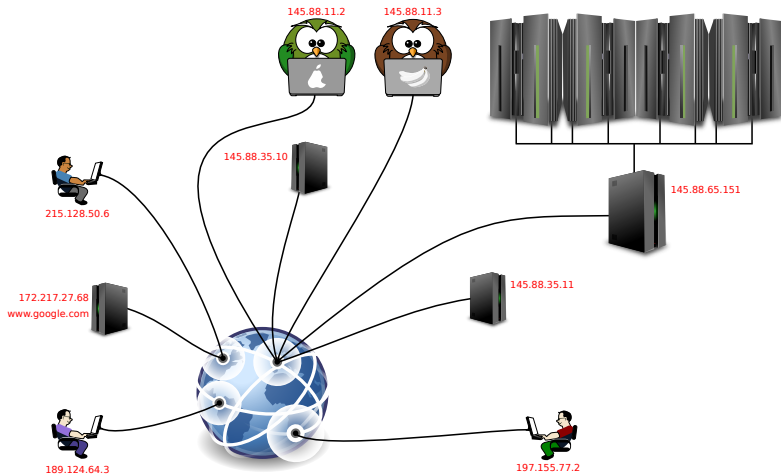
Delete saved password



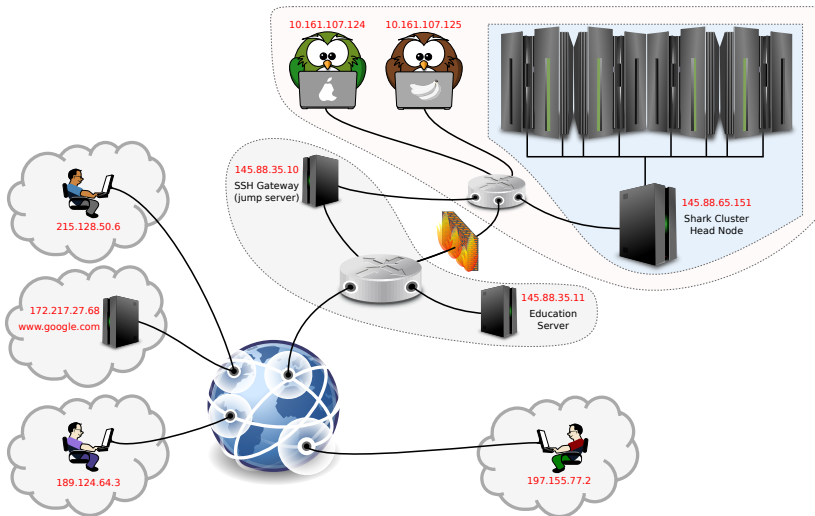
Delete saved password



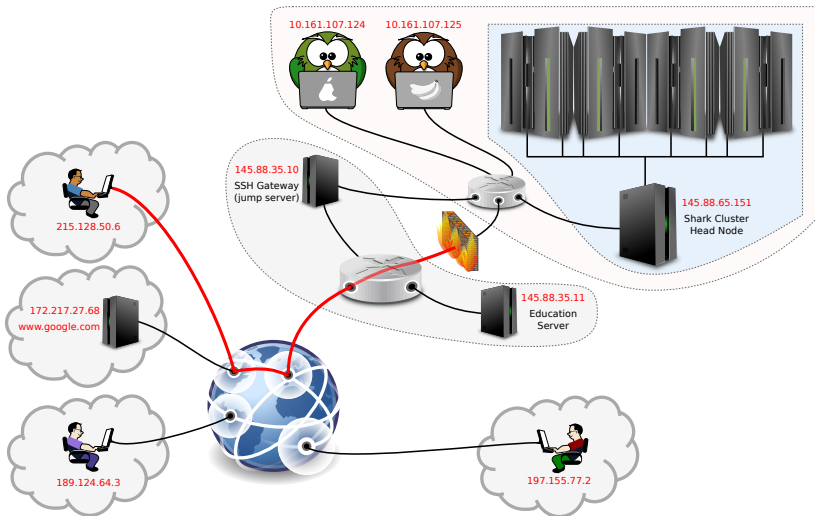
Jump Server



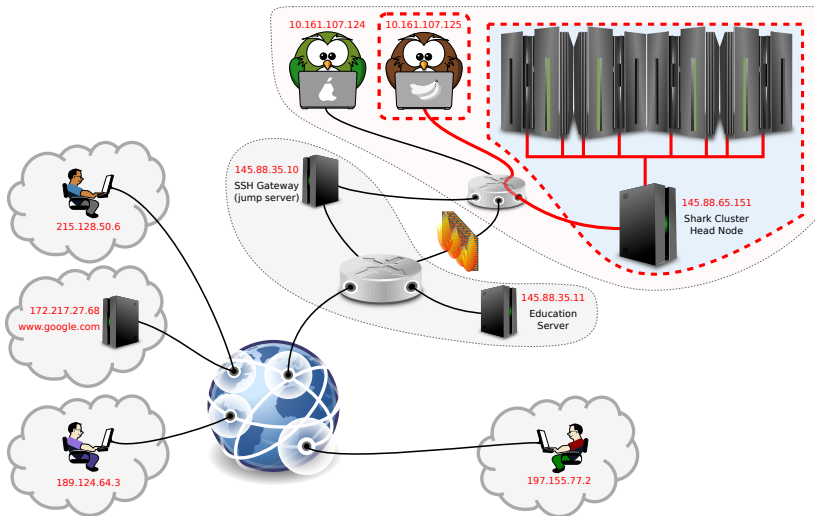
Jump Server



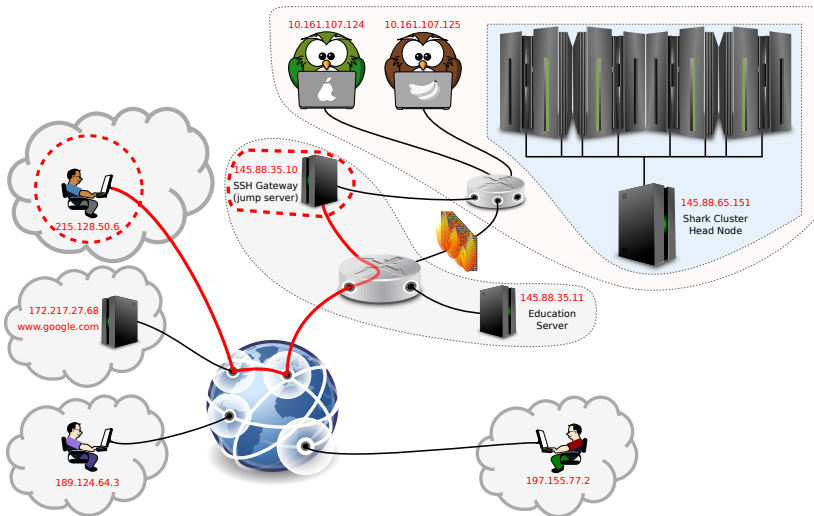
Jump Server



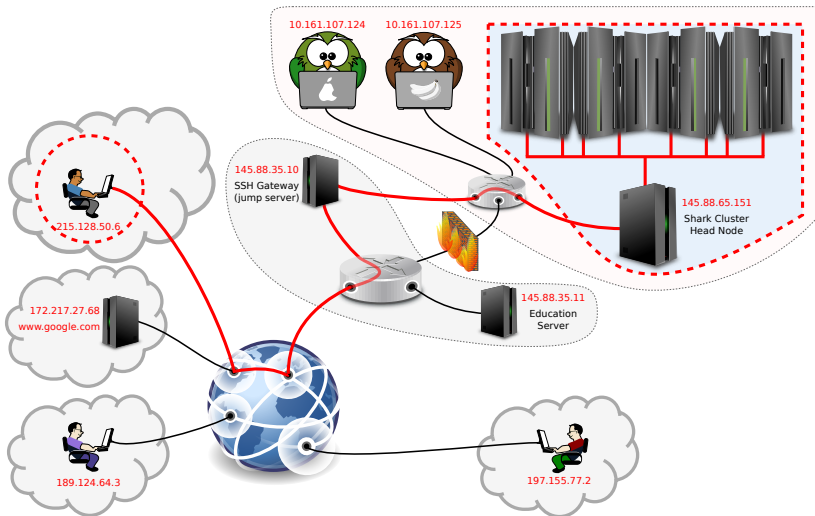
Jump Server



Jump Server

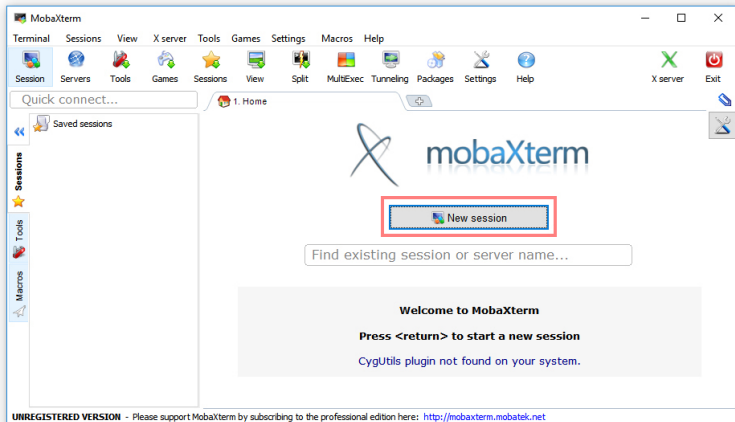


Jump Server



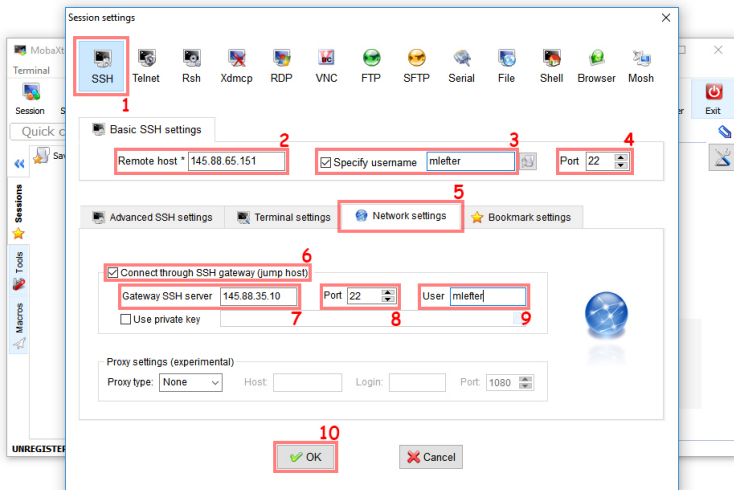
Jump Server

With MobaXterm



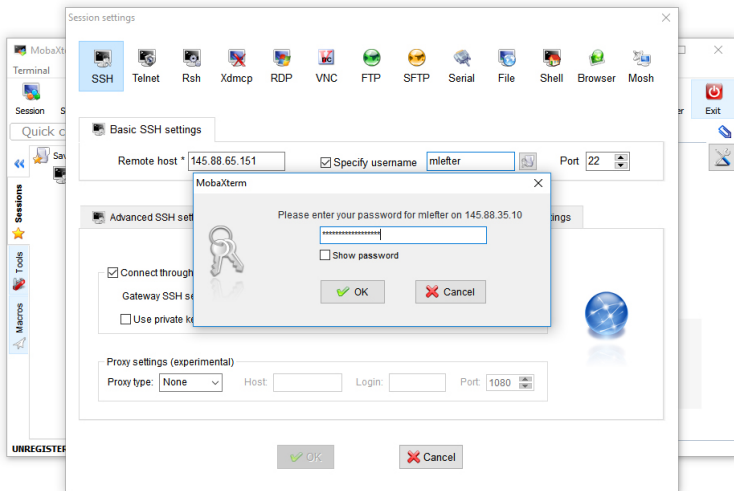
Jump Server

With MobaXterm



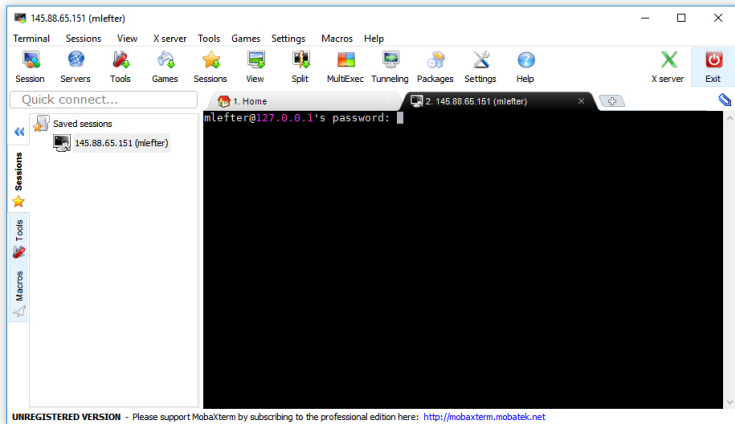
Jump Server

With MobaXterm



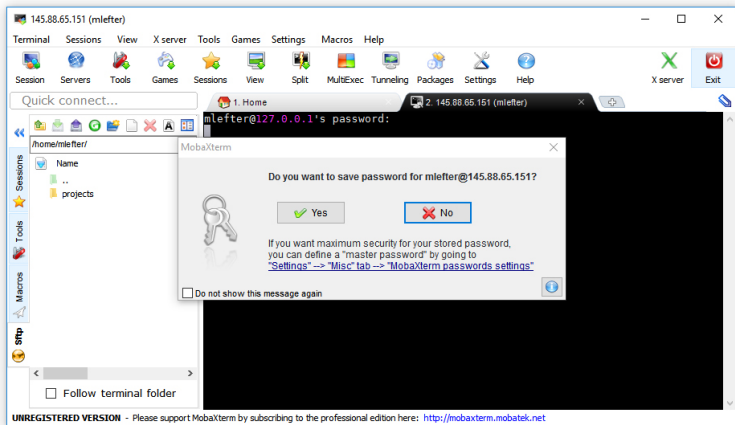
Jump Server

With MobaXterm



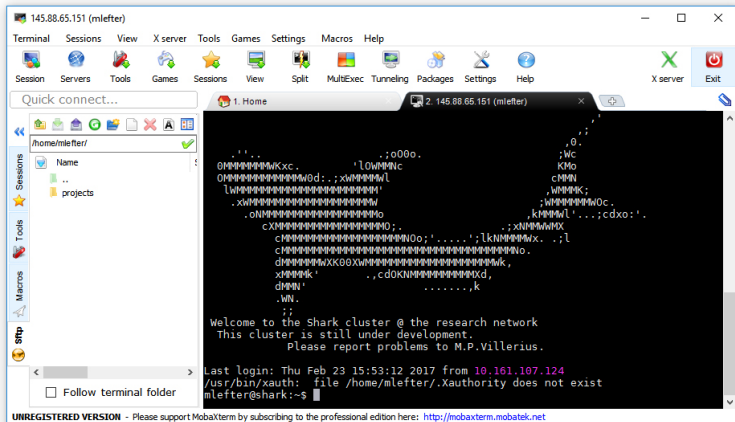
Jump Server

With MobaXterm

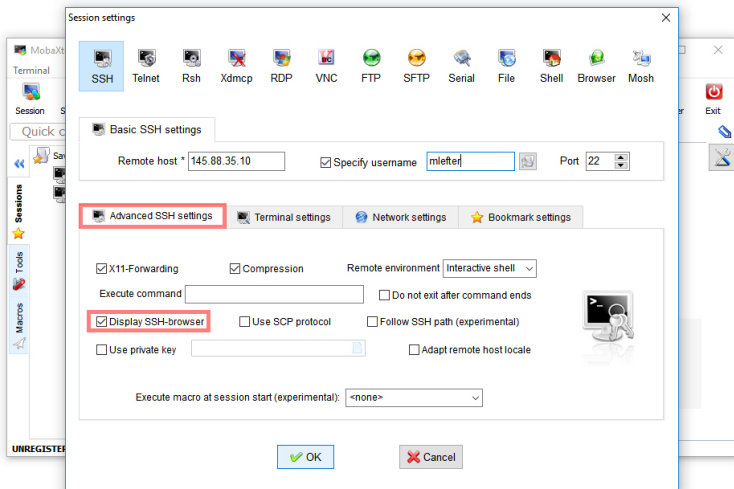


Jump Server

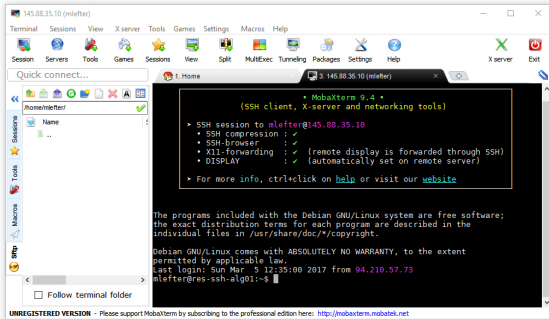
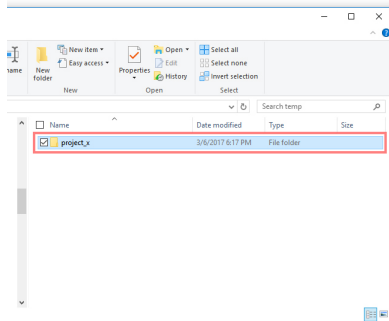
With MobaXterm



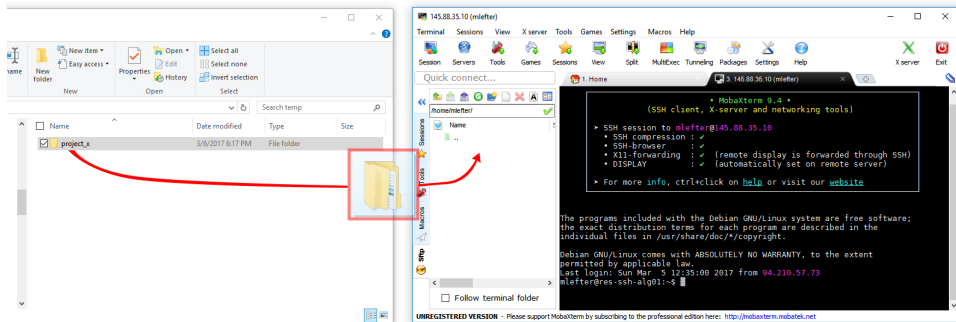
Remote copy



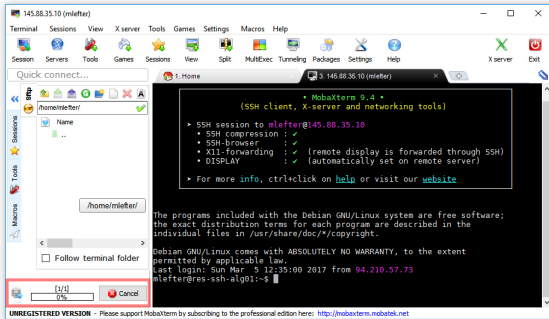
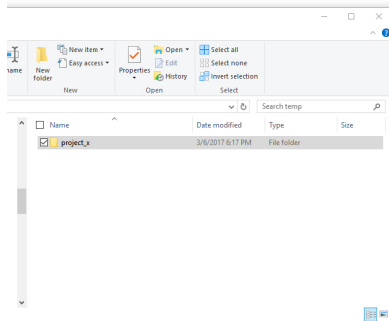
Remote copy



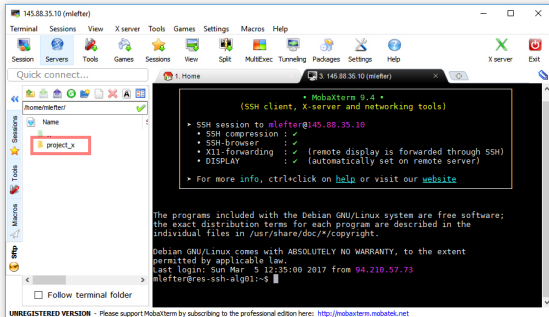
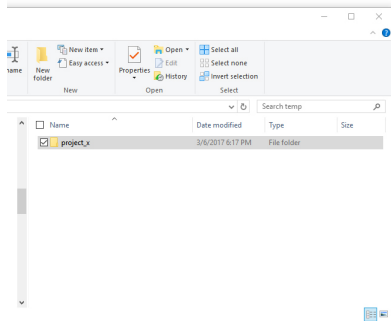
Remote copy



Remote copy



Remote copy



Linux SSH Client

```
ssh username@address
```

If no `username` is provided `ssh` will assume that you want to authenticate as the same user you use on your local machine.

```
$ ssh jan@some_server
jan@some_server's password:
Welcome to some server!
Last login: Tue Jan 22 12:58:00 2019 from 11.22.333.134
$
```



Leiden University
Medical Center

Acknowledgements

Mihai Lefter
Jonathan Vis
Jeroen Laros

