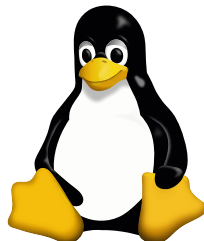


## Practical Linux

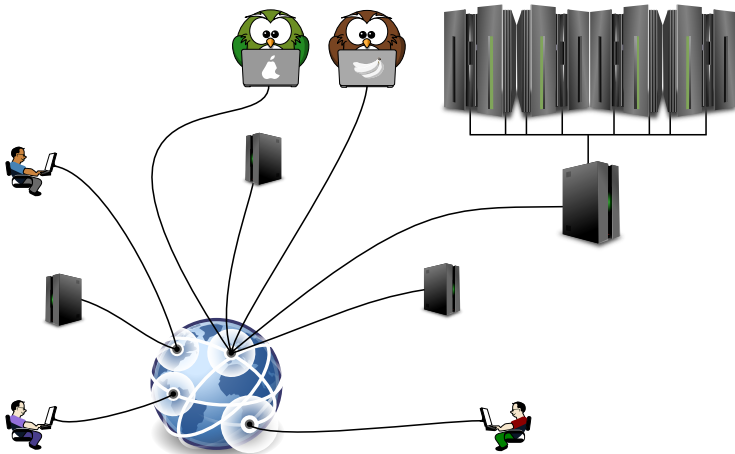
### Connecting to Other Machines



Department of Human Genetics  
Center for Human and Clinical Genetics

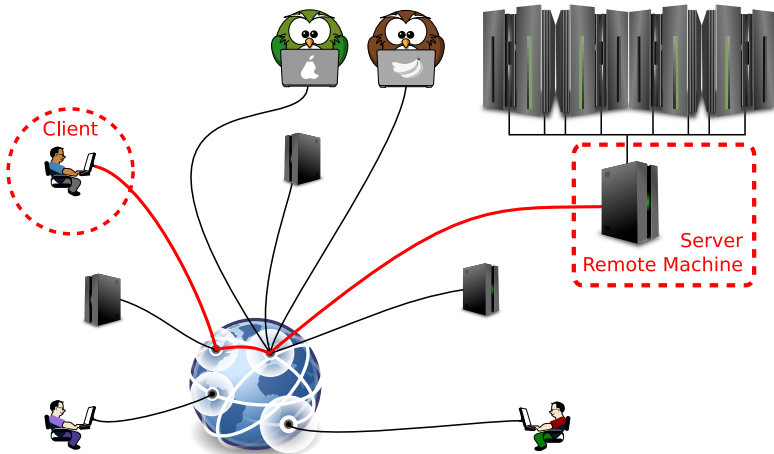
# Basics

## Overview



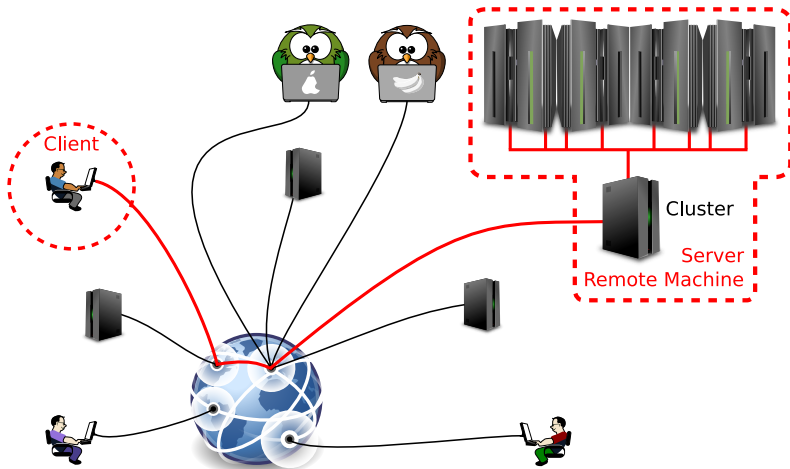
# Basics

## Overview



# Basics

## Overview

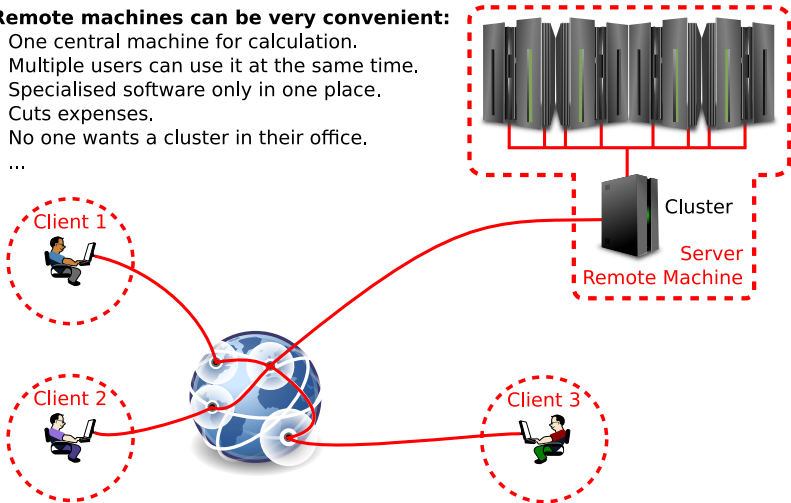




## Benefits

### Remote machines can be very convenient:

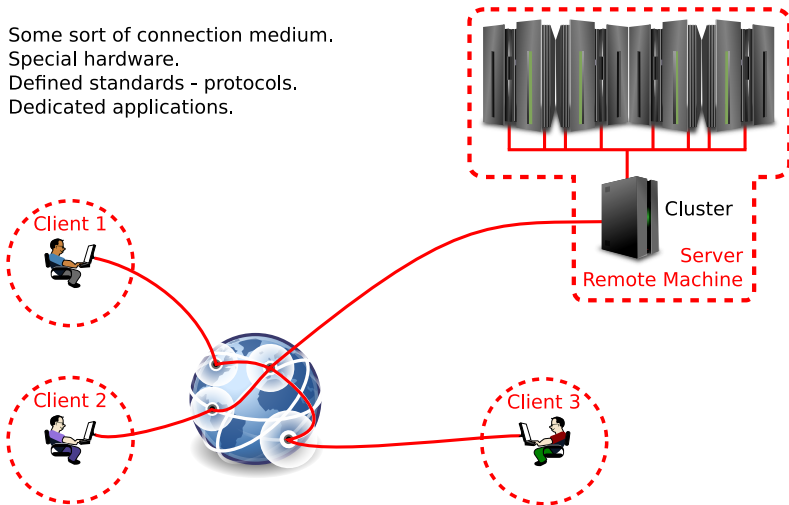
- One central machine for calculation.
- Multiple users can use it at the same time.
- Specialised software only in one place.
- Cuts expenses.
- No one wants a cluster in their office.
- ...



# Basics

## How?

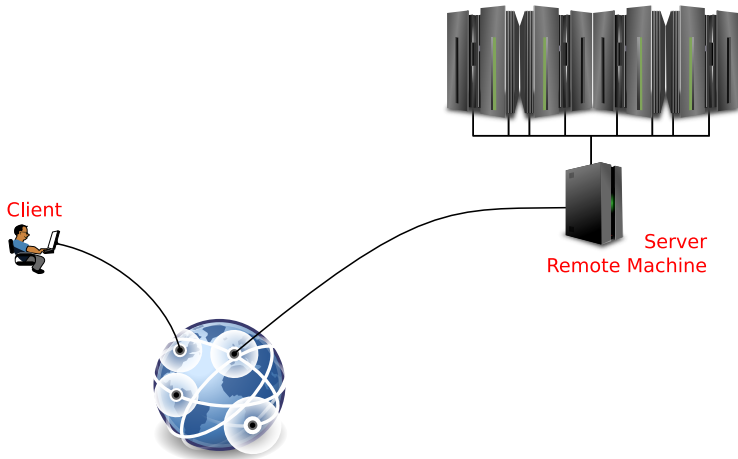
- Some sort of connection medium.
- Special hardware.
- Defined standards - protocols.
- Dedicated applications.



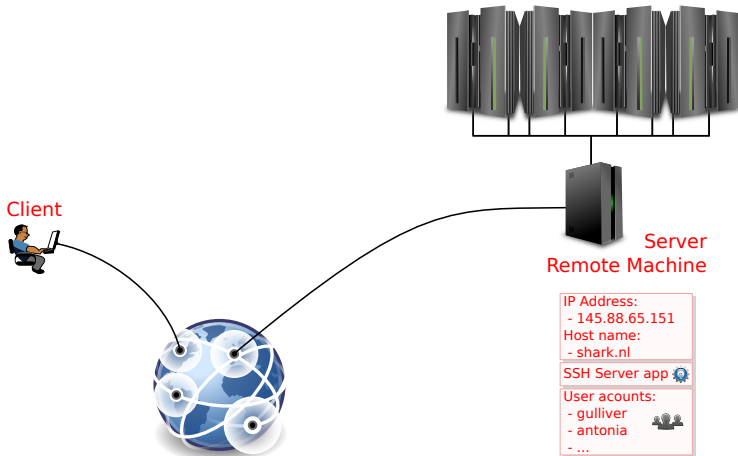
## Protocols

- HTTP - When visiting websites.
- IMAP - When fetching email.
- ...
- Telnet - Plain text protocol for remote access (unsecure).
- **SSH - Secure protocol for remote access.**
- ...
- **SFTP - For file transfer.**
- ...

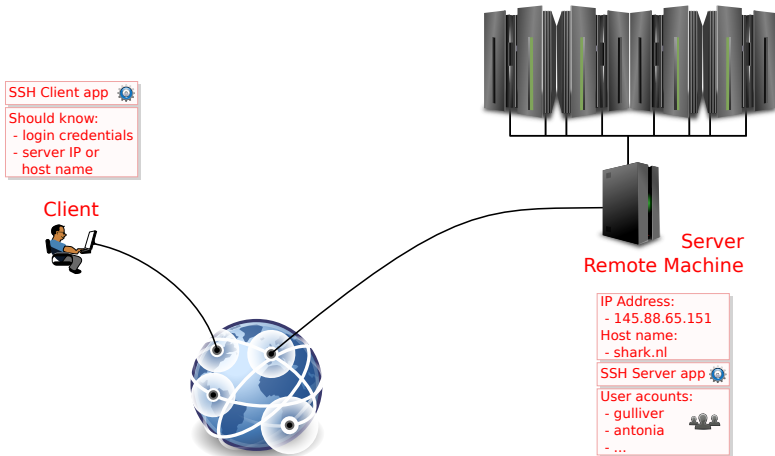
## SSH



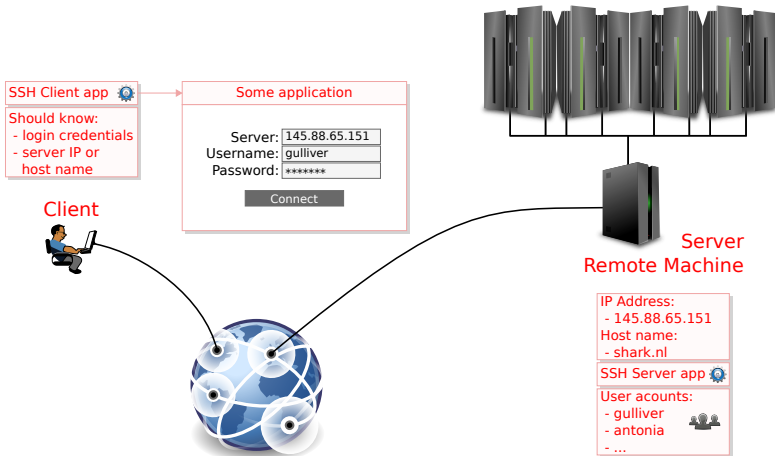
## SSH



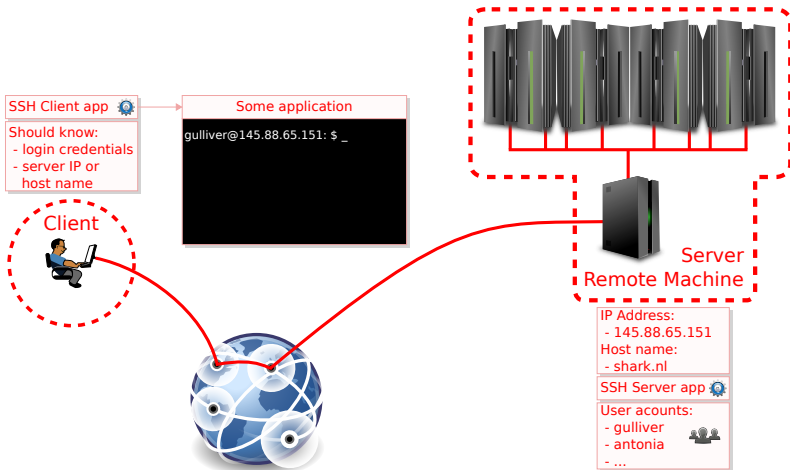
## SSH



## SSH



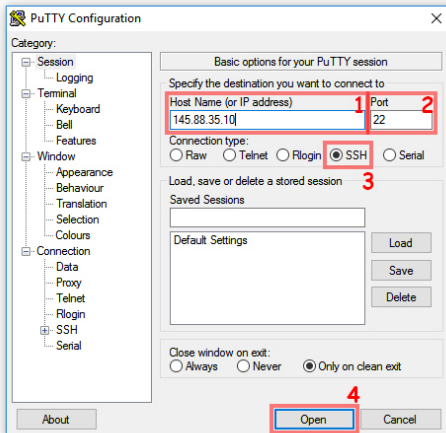
## SSH



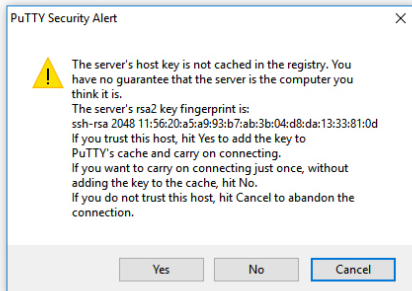


# PuTTY

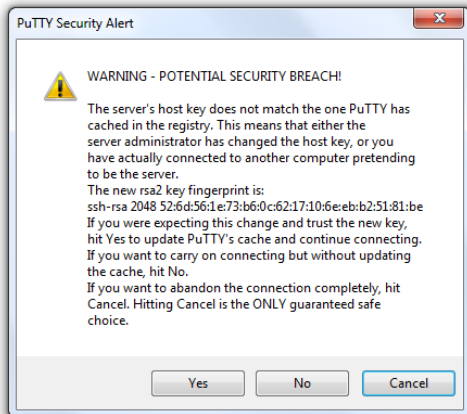
## Connect



## Connect

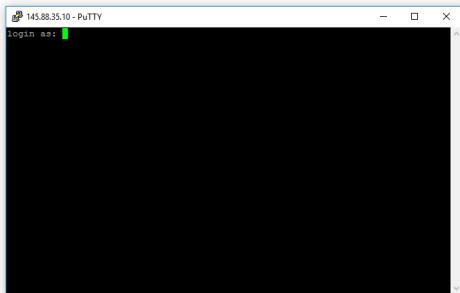


## Connect



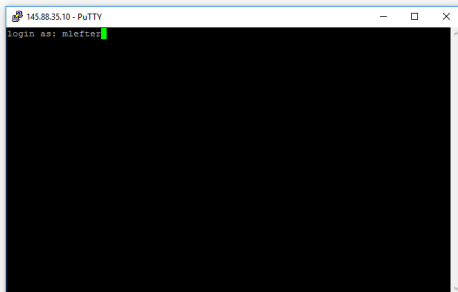
# PuTTY

## Connect



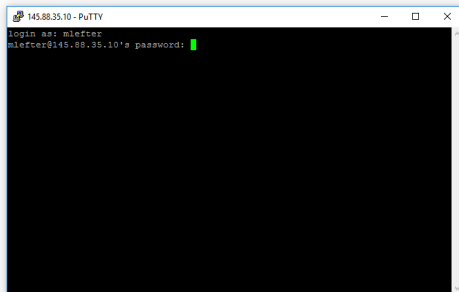
# PuTTY

## Connect



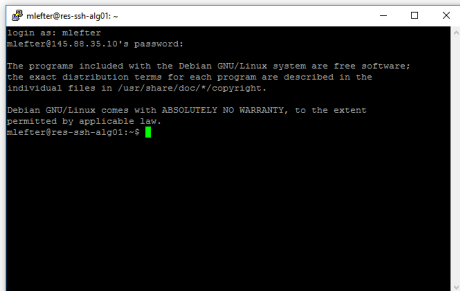
# PuTTY

## Connect



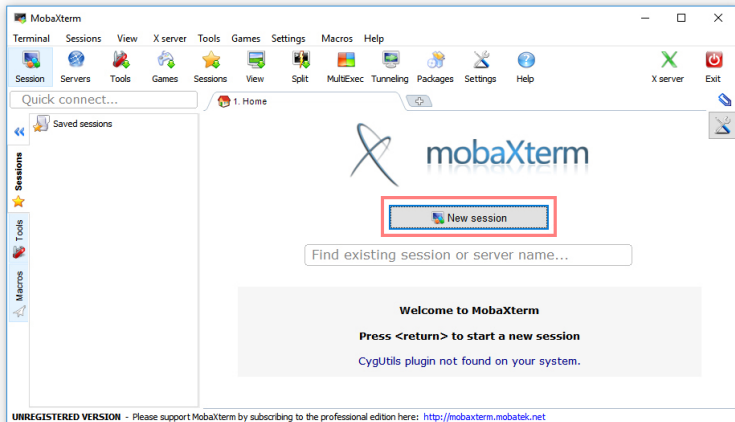
# PuTTY

## Connect



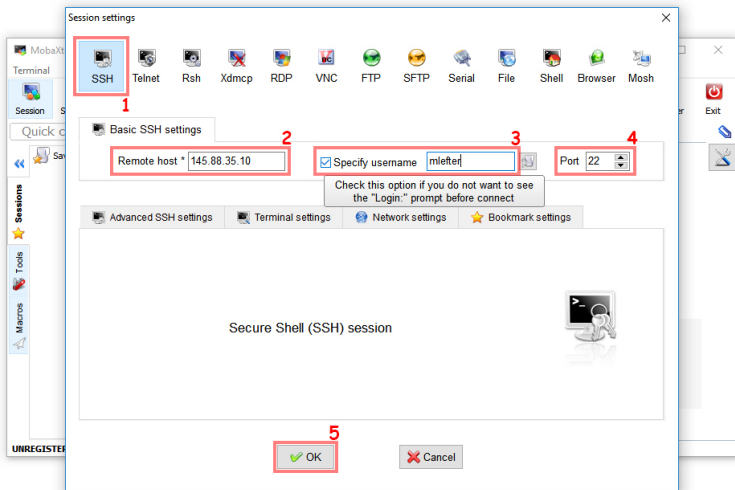
```
mlefter@res-ssh-alg01: ~  
login as: mlefter  
mlefter@145.88.35.10's password:  
  
The programs included with the Debian GNU/Linux system are free software;  
the exact distribution terms for each program are described in the  
individual files in /usr/share/doc/*/copyright.  
  
Debian GNU/Linux comes with ABSOLUTELY NO WARRANTY, to the extent  
permitted by applicable law.  
mlefter@res-ssh-alg01:~$
```

## Connect to a remote machine

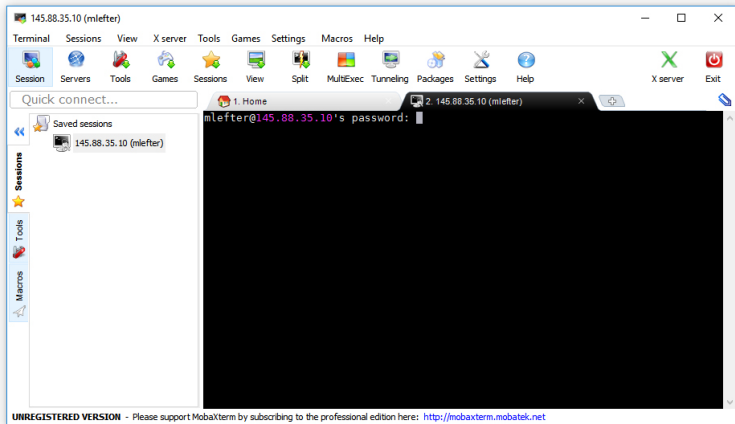




## Connect to a remote machine

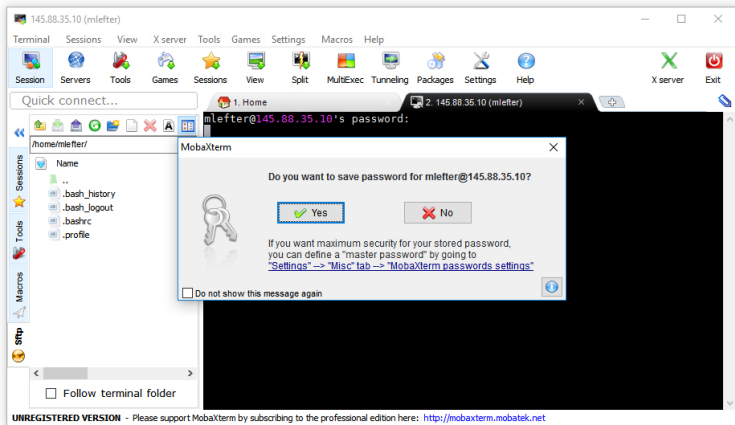


## Connect to a remote machine

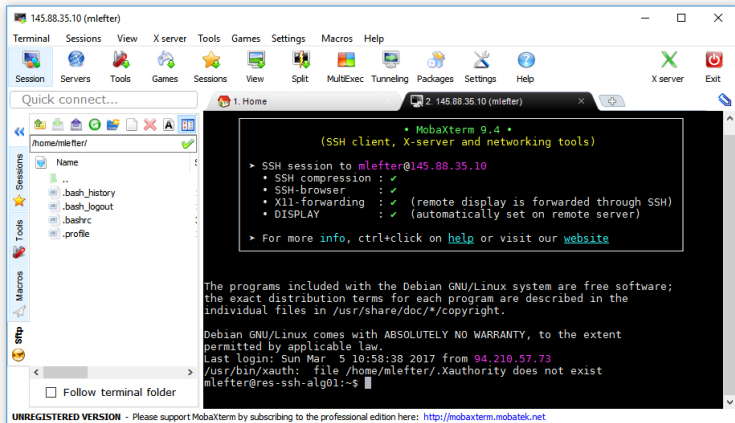


# MobaXterm

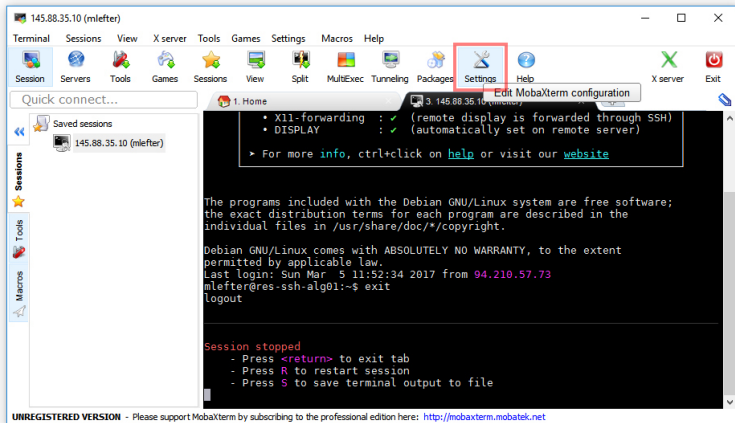
## Connect to a remote machine



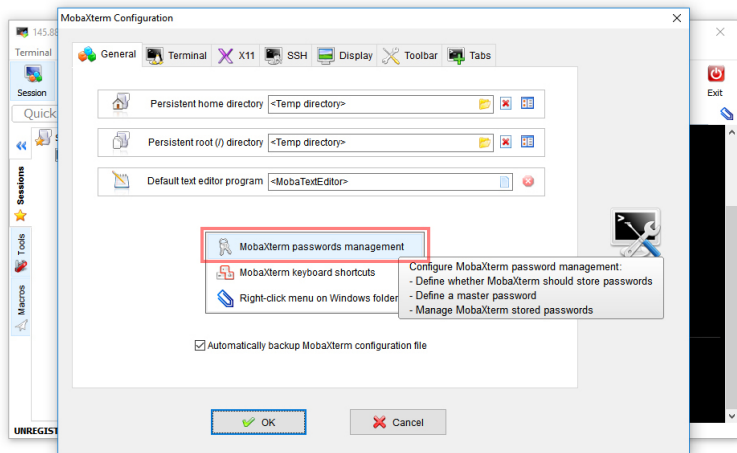
## Connect to a remote machine



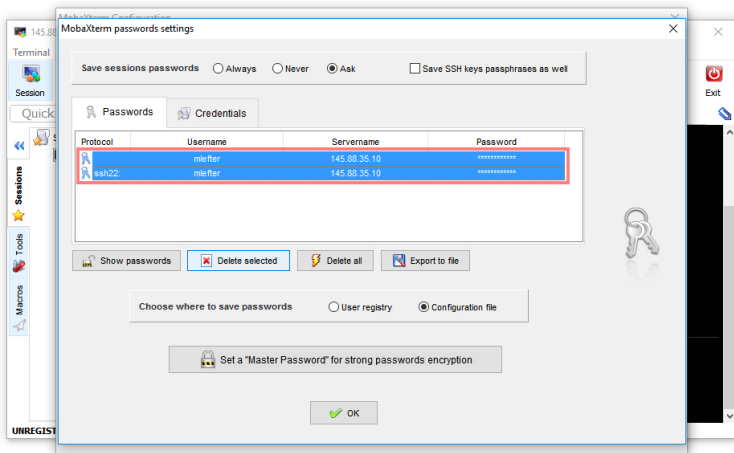
## Delete saved password



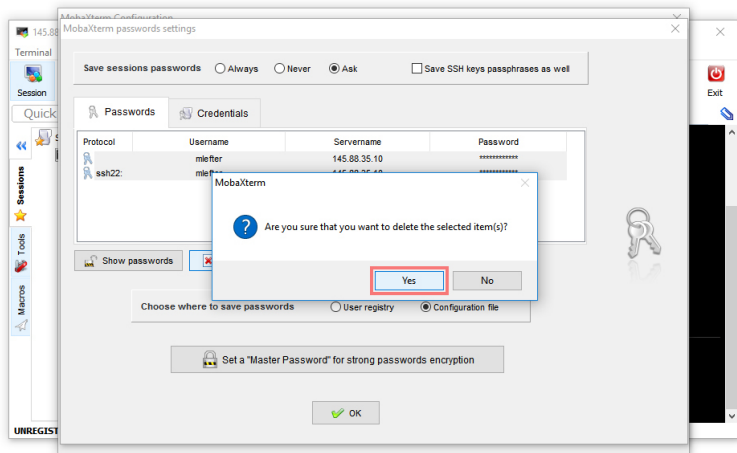
## Delete saved password



## Delete saved password

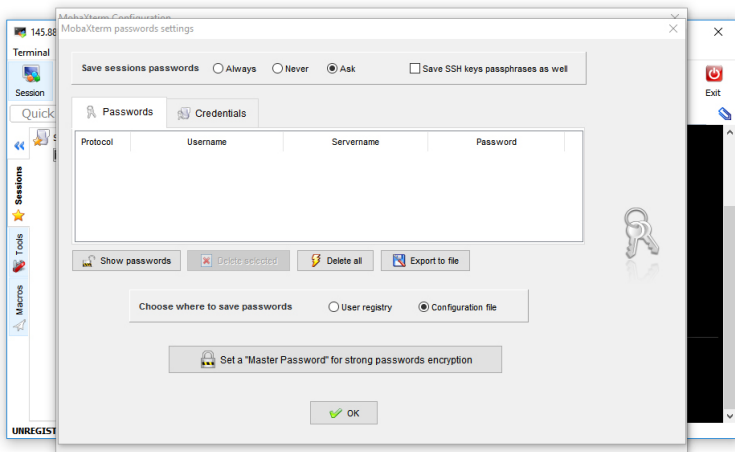


## Delete saved password

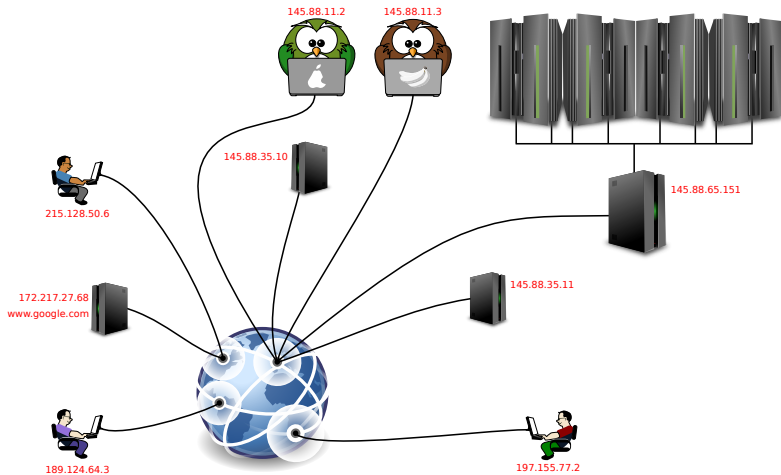




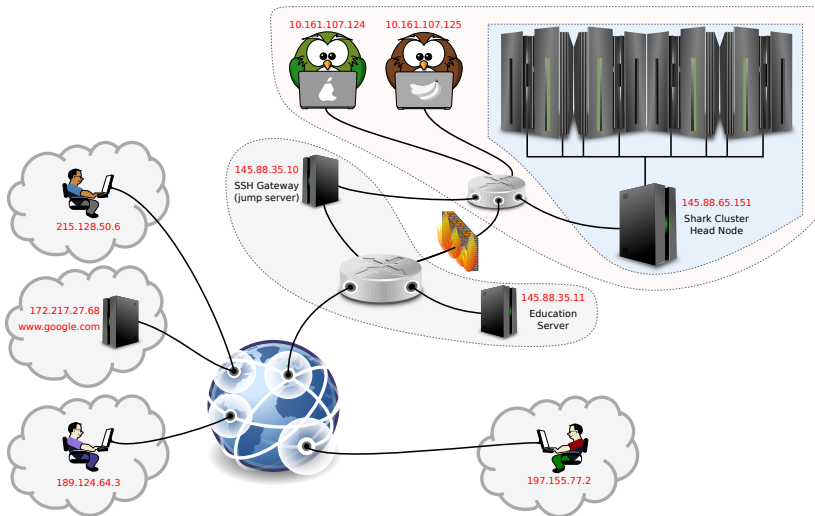
## Delete saved password



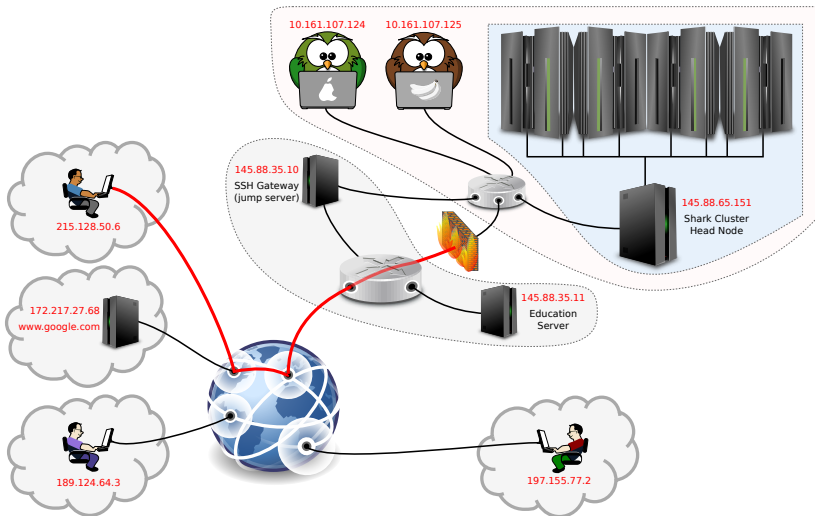
# A Bit More Closer to Reality



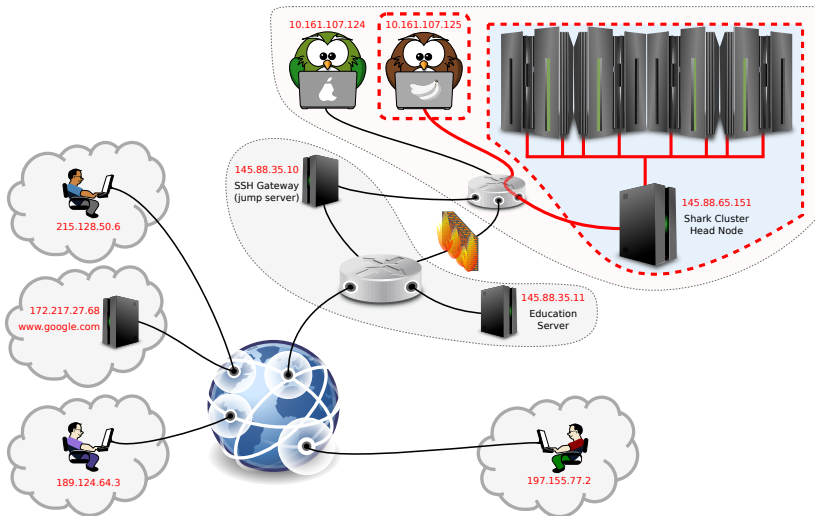
# A Bit More Closer to Reality



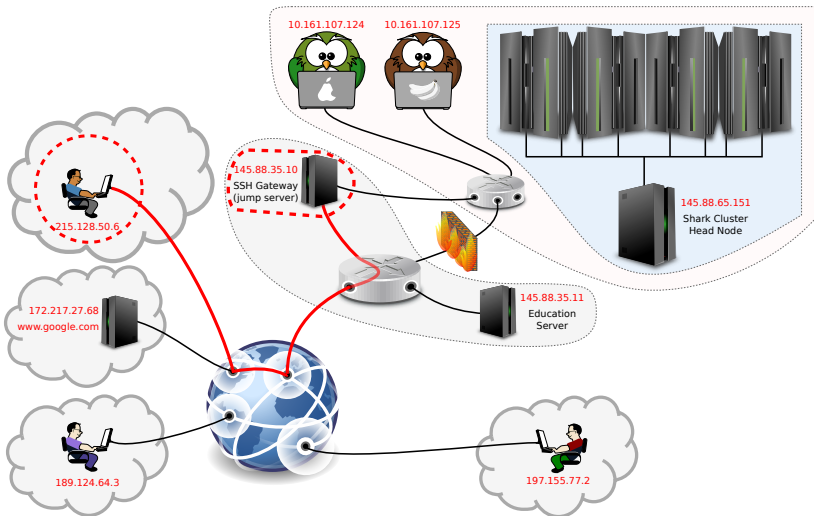
# Jump Server



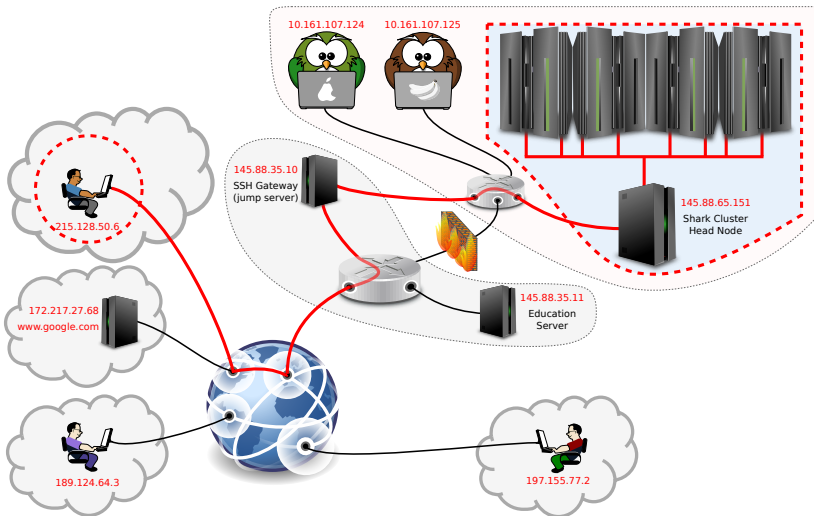
# Jump Server



# Jump Server

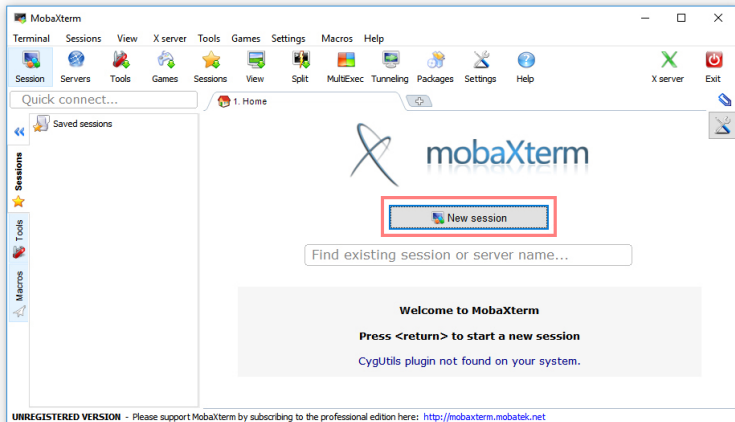


# Jump Server



# Jump Server

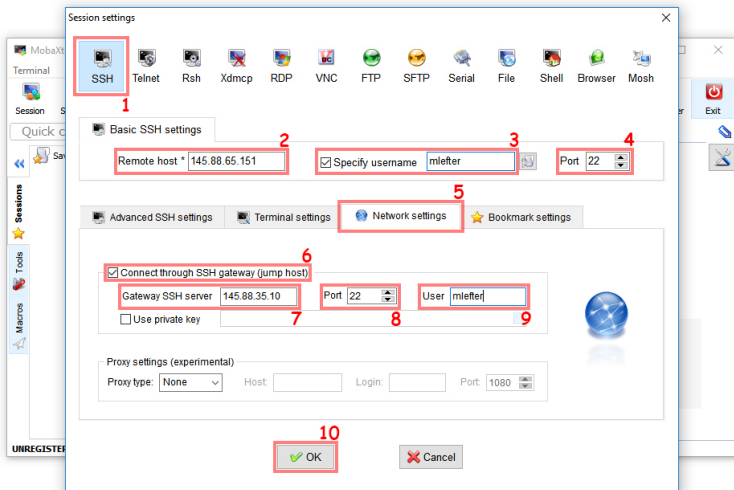
## With MobaXterm





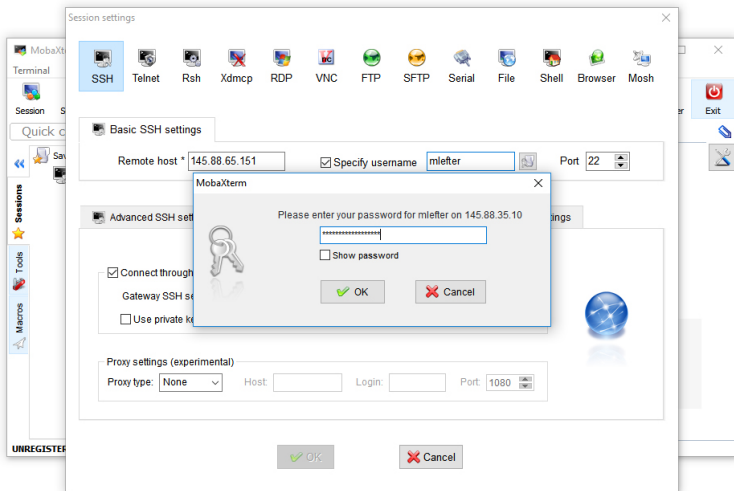
# Jump Server

## With MobaXterm



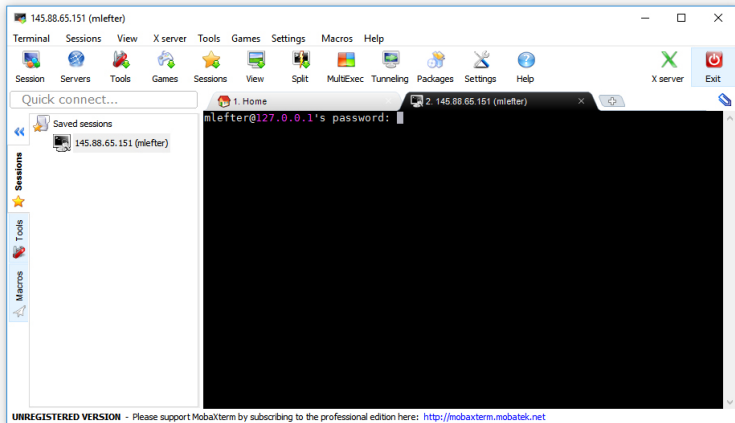
# Jump Server

## With MobaXterm



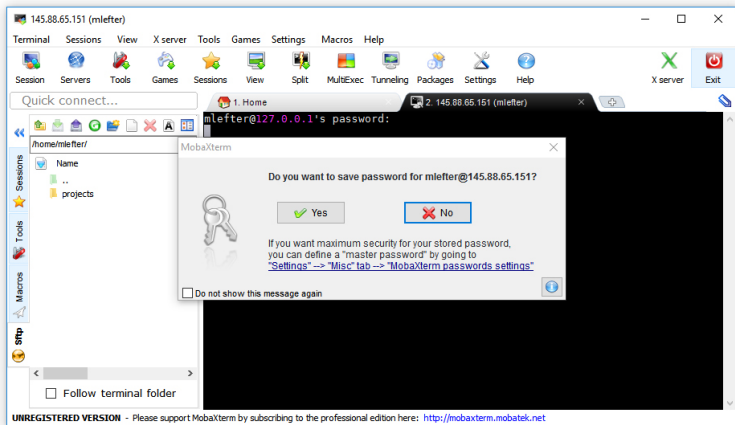
# Jump Server

## With MobaXterm



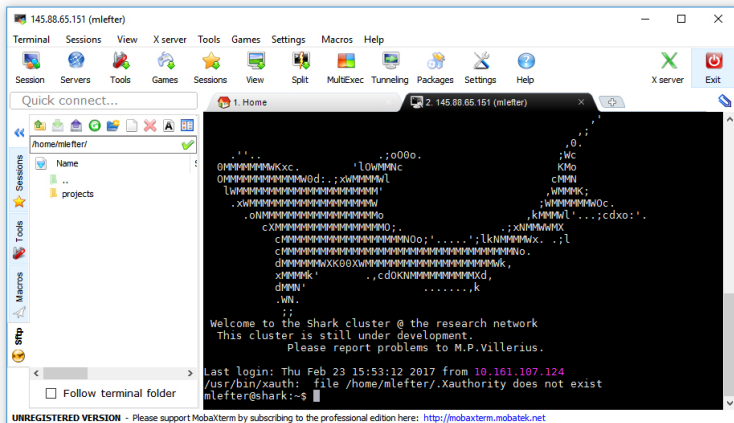
# Jump Server

## With MobaXterm

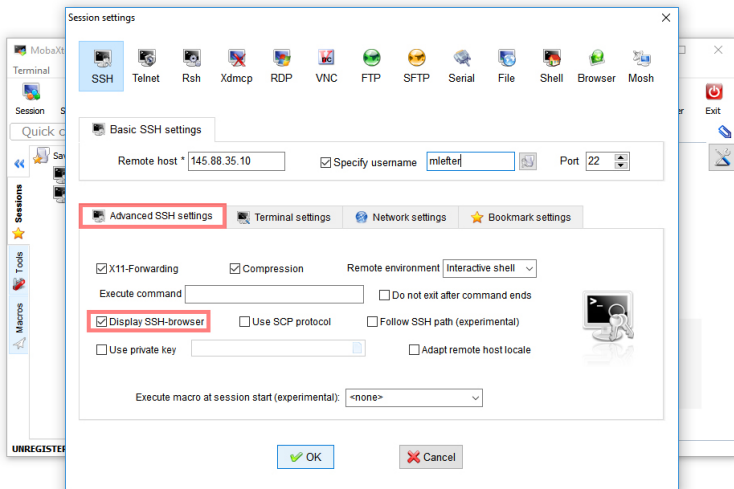


# Jump Server

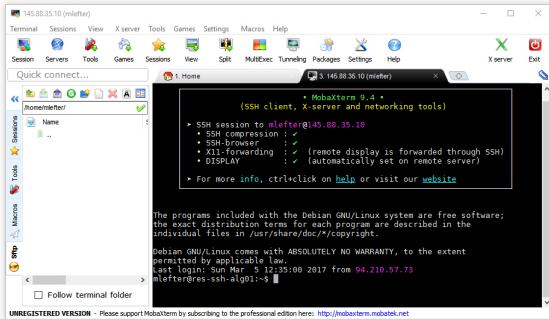
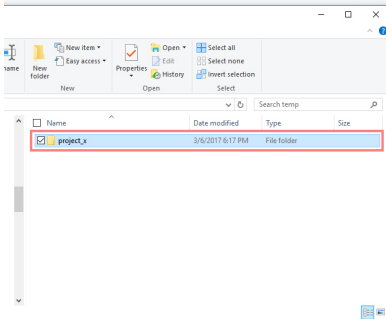
## With MobaXterm



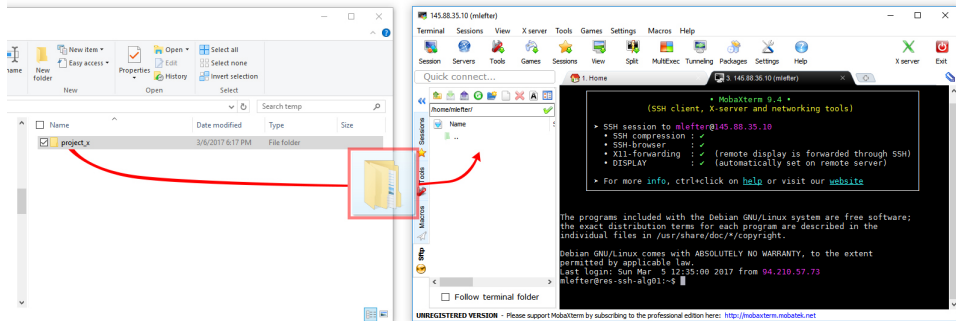
# Remote copy



# Remote copy

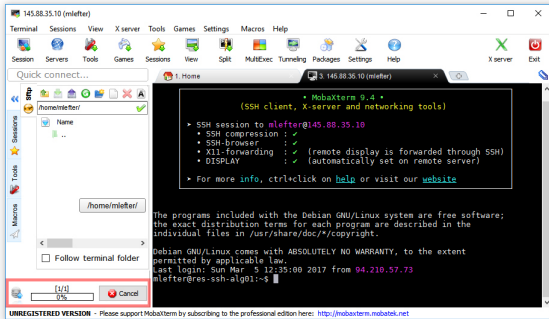
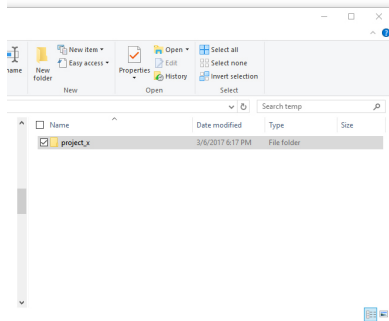


# Remote copy

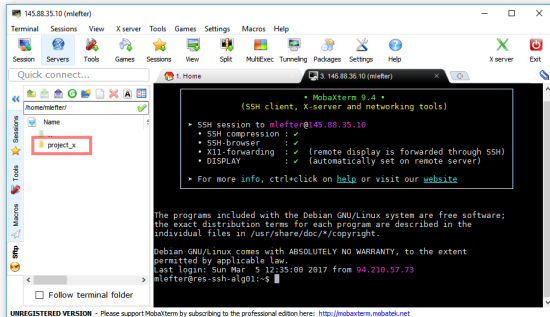
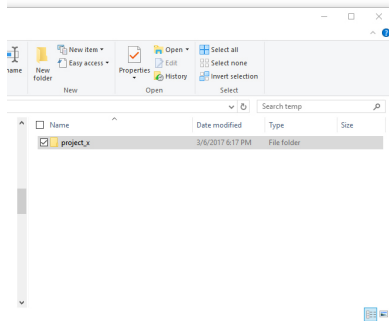




# Remote copy



# Remote copy





Leiden University  
Medical Center

## Acknowledgements

Mihai Lefter  
Jonathan Vis  
Jeroen Laros

